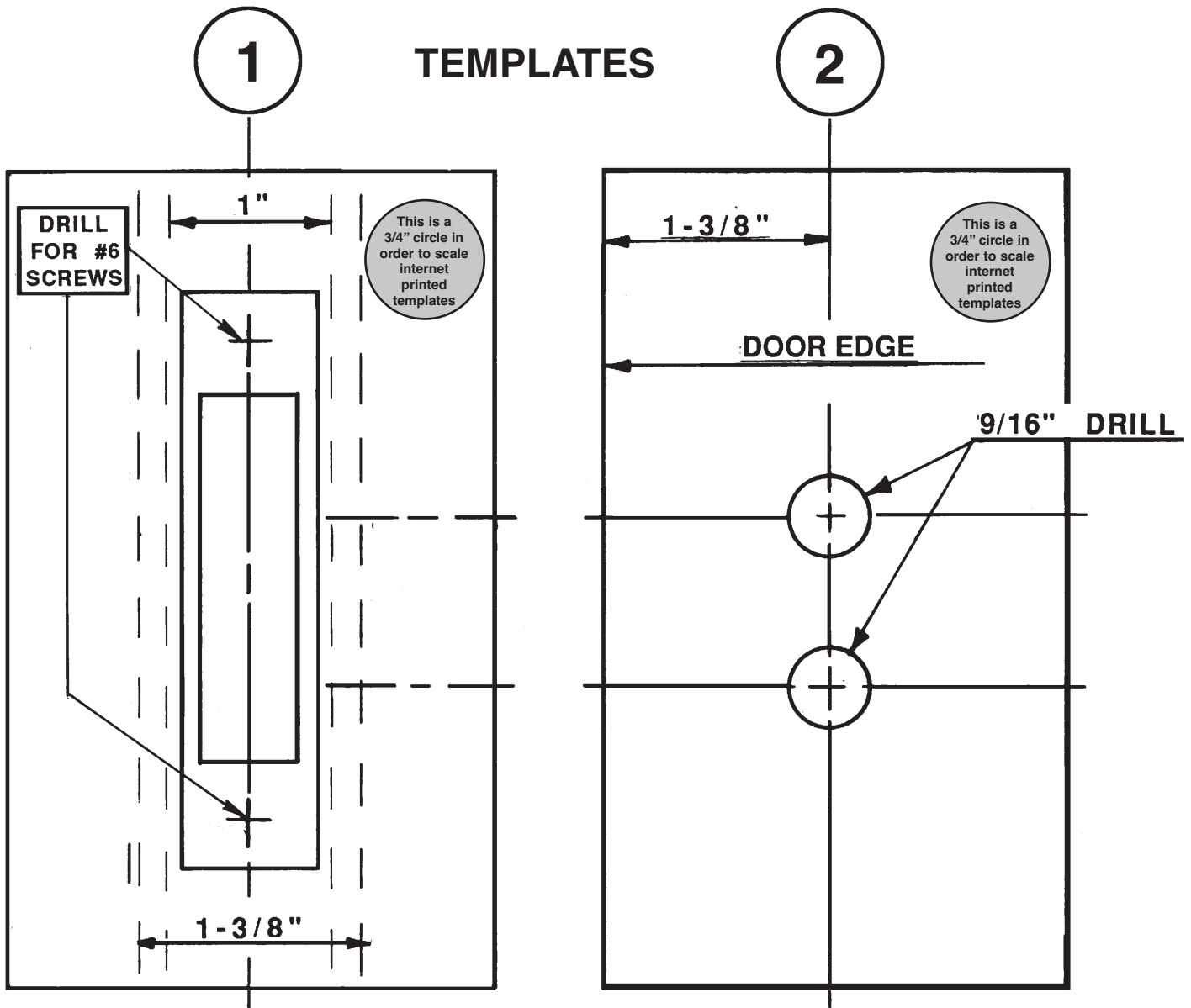


MOUNTING INSTRUCTIONS
READ ALL INSTRUCTIONS BEFORE PROCEEDING.

This mortise latch set is designed to be mounted on doors 1 inch to 1-3/8 inches thick. The bevel (strike) is reversible. See exploded view on reverse side.

- 1). Cut out templates below.
- 2). Tape template (1) on edge of door at desired height. Align appropriate lines with the edge of the door and fold over edge.
- 3). Tape template (2) on side of door, lining up the center lines of the holes with the adjacent lines on template (1) Mark cut-outs for mortised latch body and escutcheon plate holes.
- 4). Cut out door and drill holes as indicated (Note cutting dimensions on diagram on reverse side).
- 5). Insert latch set body in edge of door and fasten with #6 mounting screws (not supplied).
- 6). Fasten escutcheon plates as shown on reverse side with #6 mounting screws (not supplied). Insert lever "L" handle with shaft through square hole in cam. Screw knob onto shaft and tighten set screw.
- 7). Use installed latch to locate correct position and mount strike on door frame.

PERKO, INC
16490 N. W. 13th Avenue
Miami FL 33169-5707
www.perko.com

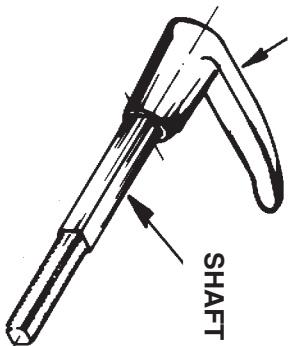


(SEE REVERSE SIDE)

LEVER
"L" HANDLE

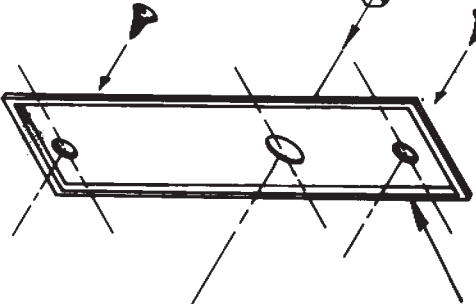
ITEM	CATALOG NUMBER
COMPLETE LATCH SET	0960000CHR
KNOB "L" HANDLE AND SHAFT ASSEMBLY	0962000CHR
ESCUTCHEON PLATE FOR "L" HANDLE SIDE	092800089A
ESCUTCHEON PLATE FOR KNOB SIDE	092700089A
"T" HANDLE WITH COTTER PIN BEVEL, WITH CAM (STRIKE)	096000099A
STRIKE PLATE ONLY (NOT SHOWN)	0912000CHR

REPLACEMENT PARTS

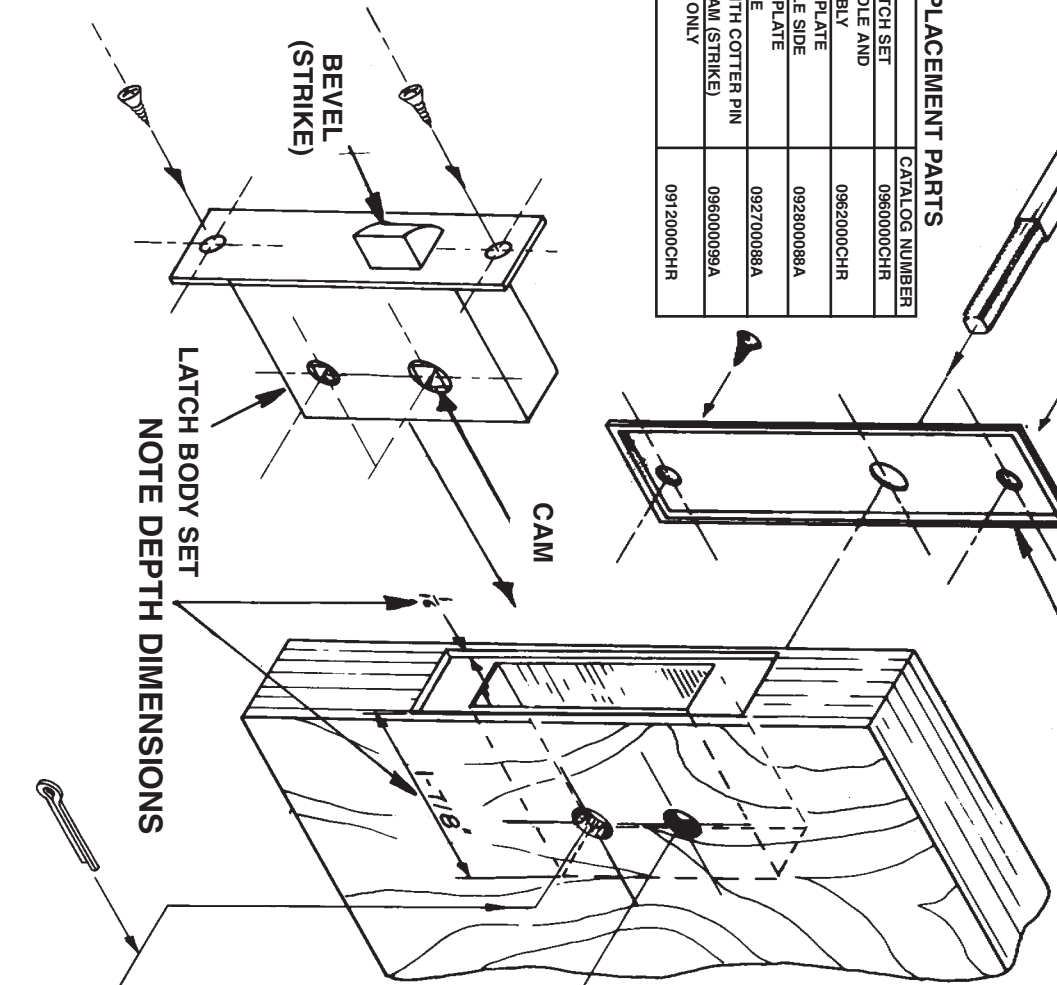


SHAFT

ESCUTCHEON PLATE
("L" HANDLE SIDE)



EXPLODED VIEW
CAT. NO. 0960000CHR LATCH SET



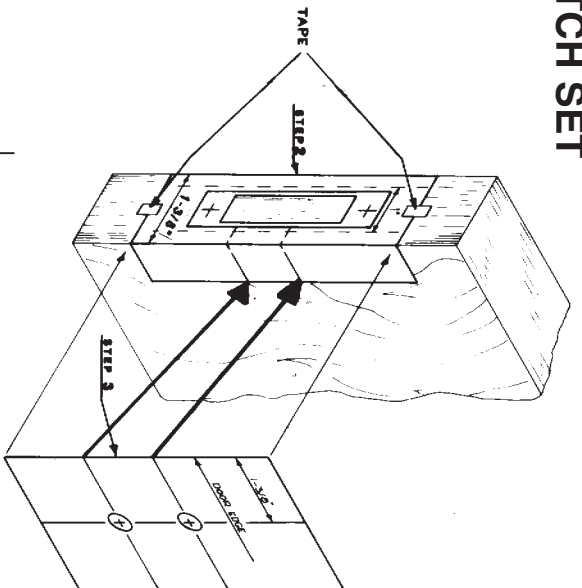
CAM

BEVEL
(STRIKE)

LATCH BODY SET
NOTE DEPTH DIMENSIONS



ALL MOUNTING SCREWS
ARE #6 SIZE
(NOT SUPPLIED)



TAPE

STEP 2

STEP 3

STEP 4

ESCUTCHEON PLATE
(KNOB SIDE)

KNOB

"T" HANDLE